

\$175,000 - 86 Skyline Dr, Ancramdale

MLS® #126736

\$175,000

Bedroom, Bathroom, 903,870 sqft
Land on 21 Acres

N/A, Ancramdale, NY

Ancram Land 21 Acres Pond Skyline Drive. These 21 Acres are estate quality in an area of lovely rural homes. Located on a quiet road, Skyline Road in Ancramdale, it is easy access to Hudson and Wassaic train stations. With lovely views, privacy with a pond it is perfect for horses.

Essential Information

MLS® #	126736
Price	\$175,000
Square Footage	903,870
Acres	20.75
Type	Land
Sub-Type	Land
Status	Active

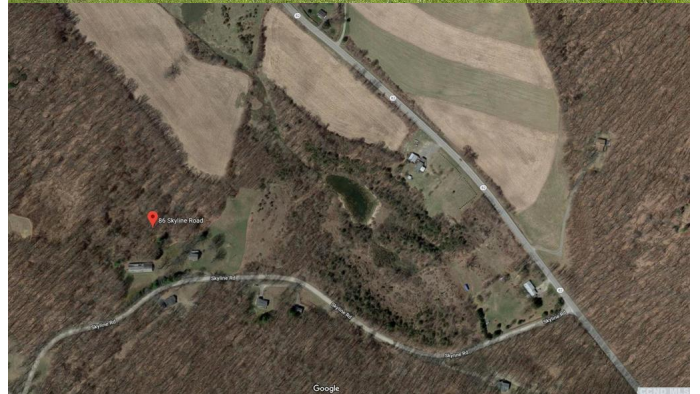
Community Information

Address	86 Skyline Dr
Area	Ancram
Subdivision	N/A
City	Ancramdale
County	Columbia
State	NY
Zip Code	12503

Amenities

View	Local, Seasonal
------	-----------------

School Information



District Taconic Hills

Additional Information

Date Listed May 18th, 2019

Days on Market 286

HOA Fees 0.00

Listing Details

Listing Office Barns & Farms Realty, LLC - Chatham

The data relating to real estate for sale on this web site comes in part from the IDX Program of the GCMLS. Real estate listings held by brokerage firms other than Murphy Realty Group are marked with the IDX logo or the IDX thumbnail logo and detailed information about them includes the name of the listing brokers. The broker providing these data believes them to be correct, but advises interested parties to confirm them before relying on them in a purchase decision. © 2020 GCMLS. All rights reserved.

Listing information last updated on May 13th, 2019 at 6:49pm EDT